

FTT-300 Foot Pedal Operating Manual



LMC Systems

Voice Solutions for your PC

Table Of Contents

FTT-100..... 3

FTT-150..... 3

FTT-200..... 4

FTT-300..... 4

General FTT-300 Instructions..... 5

Technical Support Contact..... 7

Specifications 7

Introduction

There are currently four models of the LMC Systems foot pedal. The four models can easily be distinguished by the color of the indicator light in the rear. The convention is as follows:

FTT-100 – Green LED	Simulates a keyboard single key stroke - Factory programmed to the customer’s preference.
FTT-150 - Yellow LED	Serial /USB device that sends a preset serial string based on the foot pedal position (up/down).
FTT-200 - Blue LED	USB device that the user can program to send a single keystroke or a string of keystrokes. The user can select to sequentially increment a string (Sequential) or send it in one press (Immediate).
FTT-300 - Orange LED	This model sends a game controller command and like the FTT-150 it does not interfere with the keyboard functions

----- § -----

FTT-100

The FTT-100 is a single key USB keyboard made to work with a host of computers or machine controllers that need a method of executing a function. For example, a common use is push to talk in communications or "start" / "stop" for a machine control process.

Factory pre-programmed keystrokes can include any combination of the modifiers Ctrl, Alt, and Shift. Ctrl-Alt-Shift-a, Ctrl-p, and Alt-F4 are just a few examples of what can be programmed.

Being factory programmed adds the convenience of tamper proof programming.

There are no utilities associated with this model.

----- § -----

FTT-150

The FTT-150 is a USB to serial device. A serial device does not interfere with keyboard functions if utilization of both is required at the same time.

This product is intended to work with a host of computers or machine controllers that need a method of executing a function. For example, a common uses are push to talk in communications, or "start" / "stop" for a machine control process.

The serial mode is factory set for 9600-8-N-1-N.

"Down" is sent when the pedal is pressed and "up" is sent when the pedal is released.

There are no utilities associated with this model.

FTT-200

The FTT-200 is multi-function USB keyboard made to work with a host of computers or machine controllers that need a method of executing a function. For example, two common uses are push to talk in communications or "start" / "stop" for a machine control process.

User programmed keystrokes can include any combination of the modifiers Ctrl, Alt, and Shift. Ctrl-Alt-Shift-a, Ctrl-p, and Alt-F4 are just a few examples of what can be programmed.

- Sequential: Every press of the pedal executes one keystroke in a preprogrammed string.
- Immediate: Every press of the pedal sends an entire preprogrammed string.
- Keyboard Key: Only one character is allowed. This behaves identically to a key on a keyboard in the [key down] / [key up] fashion.

There are no external utilities associated with this model.

----- § -----

FTT-300

The FTT-300 is a USB to game port device. A game port device does not interfere with keyboard functions if utilization of both is required at the same time.

This product is intended to work with a host of computers or machine controllers that need a method of executing a function. Like the FTT-150, common uses include push to talk in communications, or "start" / "stop" for a machine control process.

There are no utilities associated with this model.

General FTT-300 Instructions

Setup

To set up the pedal insert its USB connector into an open USB port. Windows will recognize and install drivers necessary to communicate with the foot pedal. When Windows is done installing the drivers the pedal is ready to communicate. Once it is connected it is ready for communication via software.

If it is installed correctly it will be seen in device manager as “HID-compliant game controller” under “Human Interface Devices.”

Programming Details

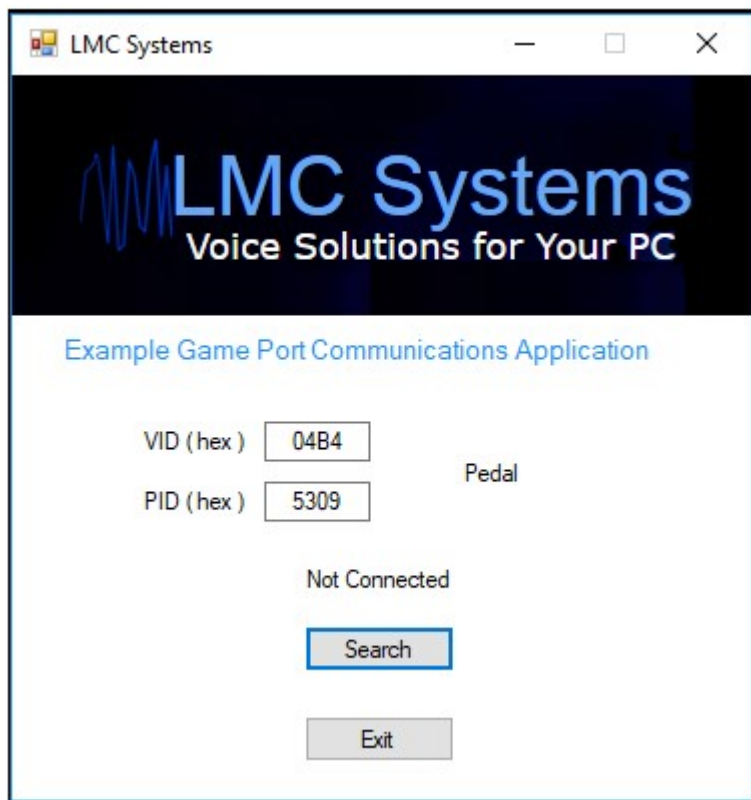
The LMC Systems foot pedal is configured as an HID-compliant game controller. It uses VID 0x04B4 and PID 0x5309.

The pedal has one IN endpoint configured. The USB HID report descriptor uses Usage Page 05 01.

The foot pedal has one button. When the button is pressed the pedal sends a communication to the computer. When the button is released another communication is sent to the computer. Every time the button is pressed and released a communication is sent, regardless of the time between presses and releases.

Test Utility

The test utility is located in the developer’s package as an executable file.



Technical Support Contact:

support@lmc-systems.com

Specifications:

FTT-100:

Device powered from host.

USB 2.0

Power consumption: 21mA

BTUs: 0.5 BTU/h

FTT-150:

Device powered from host.

USB 2.0

Power consumption: 21mA

BTUs: 0.5 BTU/h

FTT-200:

Device powered from host.

USB 2.0

Power consumption: 23mA

BTUs: 0.5 BTU/h

FTT-300:

Device powered from host.

USB 2.0

Power consumption: 21mA

BTUs: 0.5 BTU/h

This page intentionally left blank